



Art & Design

Knowledge Organisers

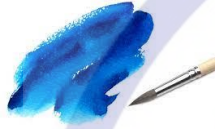


Year 3 Art & Design – Autumn Term 1: Contrast and Complement



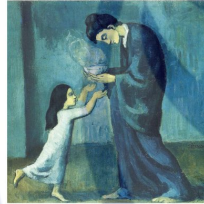
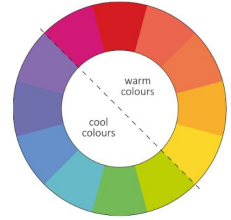
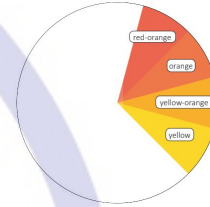
1. What is watercolour?

Watercolour paint is a translucent paint, which can be made bolder and stronger by layering.



2. What is colour theory?

Colour theory includes: complementary colours, analogous colours, warm colours and cool colours.



How do artists use colour for effect?

3. How is colour theory used in art?

Contrasting/complementary colours are, red and green, yellow and purple and orange and blue. Analogous colours are groups of colours that are next to each other on the colour wheel. Warm colours include red, yellow and orange. Cool colours include blues, greens and some purples.

4. How do artists use colour?

Artists use colour in different ways to create different effects. This includes using colour to make features stand out or to create a particular mood or atmosphere.

5. What is an evaluation?

An evaluation gives suggestions for improving or adapting the artwork.

Sketch	Bold	Contrast	Complement	Mood	Evaluation
Colour	Composition	Watercolour	Analogous	Atmosphere	Tone



Year 3 Art & Design – Spring Term 2: Ammonite



1. How can sketching prepare for a final piece of work?

Nature and natural forms can be used as a starting point for creating artwork in a variety of media. Preliminary sketches are quick drawings that can be used to inspire a final piece of artwork. They are often line drawings that are done in pencil.



2. What is a motif?

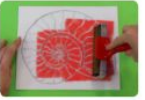
A motif is a symbol or shape used in printmaking. A motif can be a simplified version of a more complex object, such as a flower or shell.



Should an ammonite created in art be a realistic representation?

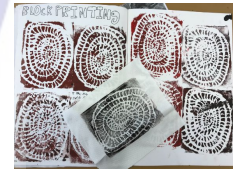
3. How do I make a printing block?

Motifs can be printed. To do this, a printing block needs to be made.



4. How do I make an ink print?

Two-colour prints can be made by creating a full print then cutting away areas of the printing block before printing again.



5. How do I make a two-colour print ?

Two-colour prints can be made by creating a full print then cutting away areas of the printing block before printing again.

ammonite	sketching	cross hatching	shading	motif	block
media	hatching	texture	tone	print	evaluate

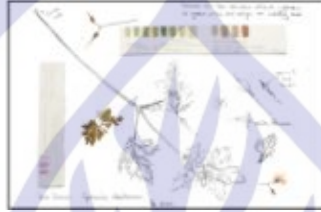


Year 3 Art & Design – Summer Term 1: Beautiful Botanicals



1. Why do some artists draw plants?

Botanical artists make accurate recordings of botanical subject matter.



2. Why do artists use their sketchbooks?

Preliminary sketches in a sketchbook can be used to communicate an idea or experiment with a technique.

3. How is botanical art different to other styles?

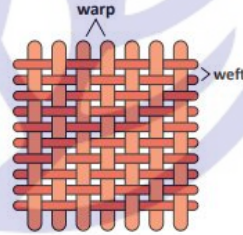
An illustration is a visual representation of a subject matter. It can often be more graphic in style than a traditional drawing or painting.

4. What inspires botanical artists?

Fruit is a popular subject matter for botanical artists and illustrators. It can be drawn and painted in different ways, including in its whole form, halved and sliced.



How can plants inspire artists?



5. How else can we represent nature?

Plants can be woven as warp and weft onto a loom.

botany	accurate	preliminary	loom	plants	graphic
botanical	communicate	illustration	warp and weft	weave	evaluate

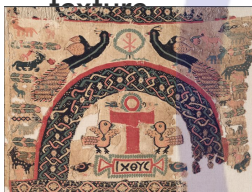


Year 4 Art & Design – Autumn Term 2: Warp and Weft



1. How has weaving artwork changed over time?

Artwork has been used at different times and in different cultures to express ideas about storytelling and religion. Similarities and differences between artwork can include the subject matter, style and use of colour and texture.



2. What are the visual elements of yarn?

Visual elements of yarn include the colour, appearance, shape, texture, elasticity and type.



How do you create a wall hanging?

4. How can I add different patterns and colours to my weaving?

Warp threads are wrapped tightly around a loom and secured. Weft threads are woven in and out of the warp threads. Each row of weft threads is pressed down tightly to make the weave tight.

5. What do you need to consider when designing a wall hanging?

A range of natural and man-made materials can be used to make a woven wall hanging, which combines different colours, shapes, patterns, yarns and decorative techniques.

3. How do you weave on a loom?

To design a wall hanging it is important to consider the type of yarn we will use as well as the colours and patterns we will include.

6. What is an evaluation?

Constructive feedback highlights strengths and weaknesses and provides information aimed at improving aspects of the artwork, which will improve the overall piece.

Yarn	Texture	Pattern	Weft	Woven	Wall Hanging
Colour	Elasticity	Warp	Weave	Loom	Thread



Year 4 Art & Design - Summer Term 1: Vista

1. What is a landscape?

A landscape is a piece of art that shows scenery, such as mountains, valleys, trees, rivers, forests or buildings.



2. Can you name three landscape artists and explain how their artistic techniques differ?

Landscape artists use different techniques to create their work. Some will paint a realistic representation of what they see and some will use colour or texture to create a particular mood or atmosphere. Significant landscape artists include Paul Gauguin, Paul Cézanne, Vincent van Gogh and Claude Monet.

What do you need to consider to design, sketch and paint a landscape?

3. What atmospheric perspective?

Atmospheric perspective in art creates the illusion of space. It emphasises the distance between objects. As objects recede into the distance, they become less detailed, lighter in tone, and more blurry.



4. Which colours are warm colours and which colours are cold?

Warm colours include orange, yellow and red. They remind the viewer of heat, fire and sunlight. Cool colours include blue, green and magenta. They remind the viewer of water, ice, snow and the sky.



5. What is the composition of your landscape?

Composition is a term used to describe the arrangement of the visual elements in a painting. It is important to consider composition when sketching and painting a landscape.

6. What is an evaluation?

Constructive feedback highlights strengths and weaknesses and provides information and instructions aimed at improving one or two aspects of the artwork, which will improve the overall piece.

Landscape	Texture	Warm Colours	Composition	Sketch	Mood
Colour	Atmospheric Perspective	Cold Colours	Detail	Paint	Atmosphere



Year 4 Art & Design – Summer Term 2: Lowry Figurines



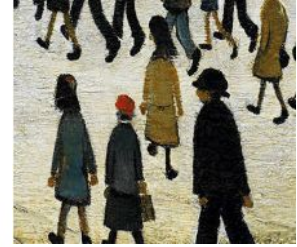
1. What is a figure drawing?

A figure drawing is a drawing of the human form in any posture using any drawing media.



2. Who was LS Lowry and what was his artistic style?

LS Lowry was a controversial artist who painted urban landscapes and the people who lived and worked there. Critics called his figures 'matchstick men' due to



4. What techniques are used to make a 3D form from clay?

Techniques used to create a 3D form from clay include coiling, pinching, slab construction and sculpting.

How do you create a Lowry inspired clay figurine?

3. What is a statue, statuette and figurine?

A statue is a carved or cast figure of a person or animal, especially one life-size or larger. A statuette or figurine is a smaller sized statue, especially one that is smaller than life-size.

5. What features should Lowry inspired clay figurines have?

A Lowry inspired figurine should have an elongated form and be painted using dark colours.



6. What is the importance of constructive feedback?

Constructive feedback highlights strengths and weaknesses aimed at improving one or two aspects of the artwork, which will improve the overall piece.

Statue	Feedback	Clay Sculpture	Wire Armature	Figure Drawing	Observation
Statuette	Figurine	Pose	Slip	Paint	LS Lowry



Year 5 Art & Design - Autumn Term 2: Tints, Tones & Shades



1. What is colour? In painting, everything has a colour. The word hue is used to describe a colour or the shade of a colour.

2. What are tints, shades and tones?

A tint is a colour mixed with white, which increases lightness.

A shade is a colour mixed with black, which increases darkness.

A tone is a colour mixed with grey. The colour stays the same, only less vibrant.

3. Which artists are known for creating landscape art?

Landscape artists include Claude Monet, Peter Graham, Max Liebermann, Robert Spencer and Joseph Mallord William Turner.



What makes an effective landscape painting?

5. What are the foreground, middle ground and background?

Landscape paintings have a foreground, a middle ground and a background. The foreground shows features that are close. The middleground and background show features in the distance.

4. What is perspective?

Perspective is an important aspect of landscape drawing. A single line of perspective directs the viewers eye into the picture and creates the impression of depth and distance.



tint	tone	shade	perspective	preliminary sketch	horizon
hue	William Turner	Claude Monet	Max Liebermann	Robert Spencer	Joseph Mallard

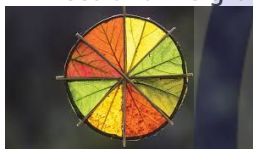


Year 5 Art & Design - Spring Term 2: Nature's Art



1. What are natural forms?

Natural forms include plants, grasses, leaves, flowers, shells, stones, trees and the ground.



2. How do artists use natural materials?

Most land artists will use materials from the local environment. Some artists will enhance a natural material by adding colour while some artists will use the natural textural or patterned qualities of the original material.

3. What materials are used for land art?

Natural materials that can be used for land art include leaves, flowers, grasses, seeds, clay, sand and any other materials found in the local environment.



How can natural materials be used to create art?

4. What are relief sculpture projects?

Relief sculpture projects from a flat surface, such as stone. High relief sculpture clearly projects out of the surface and can resemble a freestanding sculpture. Low relief, or bas-relief sculptures do not project far out of the surface and are visibly attached to the background.

5. What is an installation?

An art installation is a visual artwork, often created for indoor spaces, such as galleries and museums. Most installations will start by the artist making preliminary sketches and models, before refining them to create ideas for a finished piece.

land art	natural forms	artistic movements	ideas	methods	approaches
relief sculpture	preliminary sketches	earthworks	bas-relief	high relief	low relief



Year 5 Art & Design - Summer Term I: Expression

1. What Is Expressionism?

Expressionist artists seek to express their subject's **feelings, moods, and emotions** or themselves, rather than representing the real world.



4. What is adding text called and how can this help?
Adding text to an image is called **overlay text**. Overlay text can help to **express** the **intention** of the artwork.

2. Who is Edvard Munch?

Edvard Munch was a Norwegian Expressionist painter. His best-known work is *The Scream*, which has become an **iconic** image in the art world.



Self-portrait with Brushes by Edvard Munch, 1904

What did Expressionist artists try to achieve through their artwork?



The Scream by Edvard Munch, 1893



Portrait Rosa Schapire by Walter Gramatté, 1920

3. How is colour used in

Expressionism? In Expressionist art, the use of colour is highly **intense** and **non-naturalistic**. The application of colour is freely applied and **textural**.



The Sick Child by Edvard Munch, 1896

5. What is a portrait?

A **portrait** is a picture of a person that can be created through drawing, painting and photography. **Artistic** movements or artists that communicate feelings through **portraiture** include the Expressionists.

artistic	Edvard Munch	emotions	Expressionist	feelings	iconic
intention	intense	moods	non-naturalistic	portrait/ure	textural



Year 6 Art & Design - Autumn Term 2: Trailblazers, Barrier Breakers



Forever Free

1. Who were/are significant black artists?

Significant **black artists** include Edmonia Lewis c1844–1907, Henry Ossawa Tanner 1859–1937, Augusta Savage 1892–1962, Gordon Parks 1912–2006,



2. What is a mood board? What is a montage?

A **mood board** is an arrangement of images, **materials**, text and pictures that can show ideas or concepts. A **montage** is a set of separate images that are related to each other and placed together to create a single image.

3. What is meant by art analysis?

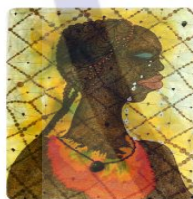
Art analysis explores different aspects of an artwork.



The Evolution of the Moody Board

4. What do visual elements include?

Visual **elements** of an artwork include colour, texture, line, **pattern** and form.



No Woman, No Cry

How have black artists influenced the art world?

5. What is conceptual art?
In **conceptual art**, the idea or concept behind a piece of art is more important than the look of the final piece.



Another Call from Africa

6. What is an exhibition plaque?

An **exhibition plaque** can include the title and date of the artwork's creation, alongside the name of the artist. It should also include the big ideas and **concepts** explored in the artwork and the **cultural** and artistic **influences** that have inspired the artist.

analysis	black artists	concepts	conceptual	cultural	elements
exhibition plaque	influences	materials	montage	mood board	pattern



Year 6 Art & Design - Spring Term 1: Inuit



1. Why are animals used in Inuit art?

Arctic animals are an important subject matter for Inuit artists. The individual appearance of the creatures in Inuit art demonstrates the respect and significance that the Inuit people give to all living things.



Inuit carver at work

2. How are 3-D forms made in Inuit art?

A 3-D form is a sculpture made by carving, modelling, casting or constructing. Inuits have been expert carvers for thousands of years. They carve art objects from materials such as bone, ivory and wood. Birds, bears and other land animals are the common artistic subject matter.



walrus soapstone carving



owl carving

4. What colours are used in The Enchanted Owl?

The Enchanted Owl uses striking pairs of colours to make it stand out. It was originally printed in both red and black, and in green and black.



artist's impression of The Enchanted Owl

What are the cultural and artistic traditions of Inuit people?

5. How can feelings be expressed in art?

Art with a personal idea or theme might express the artist's feelings about social matters or their own personal experience of social issues.



3. What is a stencil?

A stencil is a thin sheet of card, plastic, or metal with a pattern or letters cut out of it. Ink is applied to its surface which goes through the cut out and creates a print.



stenciling

mood board	montage	carving	malleable	conceptual	abstraction
compare	contrast	colour palette	constructive feedback	expressionist	naturalist

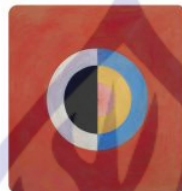


Year 6 Art & Design – Summer Term 1: Distortion & Abstraction



1. What is abstract art?

Artists use distortion or abstraction to convey feelings and moods rather than to realistically represent things.



2. How are lines used in abstract art?

Abstract artists can use line as a way of representing and capturing complex imagery.



3. How is colour used in abstract art?

Colour is one of the main ways that abstract artists represent their subject matter. The colour palettes of abstract artists are often unnatural and used freely or in combination with shapes to represent the artists' ideas and observations.

4. How are shapes used in Abstract Art?

Abstraction can be created using basic shapes. Abstraction by shape is a technique artists use to represent objects using shape only.



What is Abstract Art?

5. What is Orphism?

Orphism was an artistic movement started by artists Robert and Sonia Delaunay. Orphism was recognised as an abstract art form inspired by Cubism. Orphism focused on pure abstraction and bright colours.



6. What is most important when creating conceptual art?

In conceptual art, the idea or concept behind a piece of art is more important than the look of the final piece.



Distortion	Abstraction	Perspective	Expressionism	Conceptual Art	Realism
Mood Board	Figure drawing	Exaggerate	Portraiture	Artistic Movement	Colour Palette